

—  
**WA MADE.  
NATIONALLY TRUSTED.  
UNDERGROUND READY.**



**MURCHISON MINING**  
SERVICES



---

## ABOUT US

We design and build the essential infrastructure that keeps underground mines safe, efficient and running strong.

**WA made.** We're proud to say our products are made in WA.

**Nationally trusted.** We specialise in mining infrastructure construction, maintenance, and metal fabrication, serving mines across Australia with end-to-end project solutions tailored to the underground environment. We're a trusted partner for some of the biggest names in Australian mining, including BHP, Westgold, Meeka Metals and Ora Banda Mining.

**Underground ready.** We're experts in the underground environment. From emergency ladderways and ventilation doors to paste reticulation systems and underground piping, our work is designed to meet the highest standards of quality and underground WHS compliance.

**Experience the Murchison difference.** What sets us apart is our ability to tackle complex underground challenges with straightforward, practical solutions. We work with you closely to deliver what you need, when you need it, with no fuss and no shortcuts.

**Our expertise is your advantage.** With a team of over 50 skilled professionals, we're known for delivering safe, reliable and fit-for-purpose solutions, on time and on specification. Whether it's fabrication, installation or supplying experienced personnel, we bring the people, expertise and equipment to keep Australia's underground mines moving safely, efficiently and effectively.

Our management team are backed up by experienced professionals who bring skill, integrity and hands-on understanding of underground mining to every project. With safety, reliability and decades of industry know-how at the core of what we do, our people are the reason you can trust us to deliver. Every time.



**CHRIS PIGGOTT**  
Managing Director

---

***Founded MMS in 2016***

30 years of underground mining experience.

Chris leads with a hands-on approach, making sure every project delivers on safety, quality and client expectations. His deep understanding of underground operations and strong industry relationships have helped shape MMS into a trusted name in mining infrastructure, fabrication and labour hire.



**MARK CHATFIELD**  
WHSQ Manager

---

***Joined MMS in 2025***

35 years of resources sector experience.

Mark brings serious depth to our safety leadership, having led safety and training teams across Tier One sites and major contracting environments. His industry experience spans a wide range of commodities, including iron ore, gold, nickel, lead-zinc, lithium, coal, rare earths and diamonds, across open cut and underground operations. He's a proactive safety leader who encourages a culture of shared responsibility and mutual accountability.



**DANIEL CARR**  
Fabrication Workshop Manager

---

***Joined MMS in 2020***

25 years of metal fabrication expertise and 15 years of mining industry experience.

A qualified boilermaker, Dan oversees our fabrication workshop operations, ensuring high-quality fabrication and maintenance solutions that meet the demands of underground mining projects. Dan's leadership, technical expertise and focus on safety and efficiency make him a key part of our team in delivering reliable solutions to our clients.



**TOM HAMPTON**  
Mobile Plant Manager

---

***Joined MMS in 2022***

15 years road transport industry experience and three years mining industry experience.

Tom brings a strong background in fleet maintenance as both a mechanic and a fitter/maintenance manager. Tom specialises in diagnosing electrical faults and managing equipment breakdowns, with a practical, problem-solving approach that keeps operations running smoothly.

# OUR SERVICES



## PERSONNEL

We can provide you with first-class underground personnel across a wide range of disciplines. We employ a highly skilled, in-house workforce with extensive underground mining experience across multiple disciplines, guaranteeing our people will deliver consistency, capability and commitment. Our people know the job and know it well.

- Statutory underground shift supervisors
- Boilermakers
- Mechanical fitters
- Machinery operators
- Crane operators
- Riggers
- Airleg operators
- Scaffolders
- Poly welders
- Carpenters
- Concreters and form workers

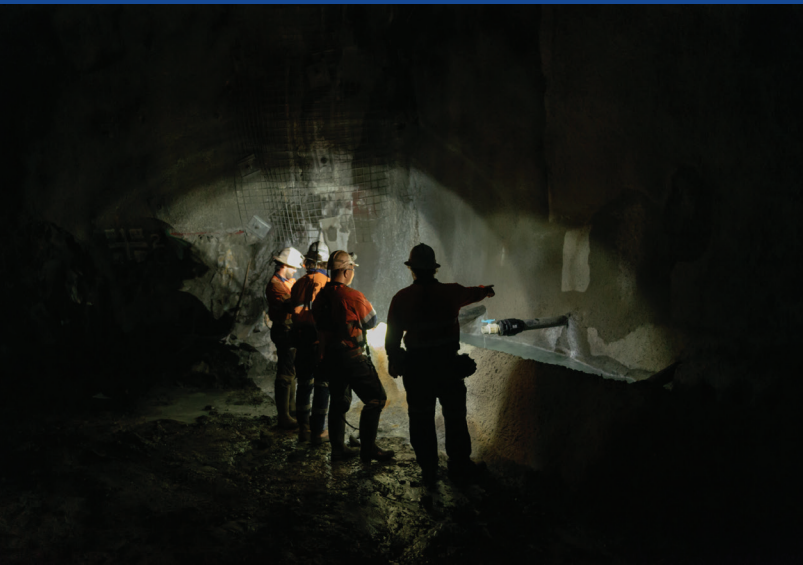


## UNDERGROUND MACHINERY

We own and maintain a fleet of reliable underground machinery, ready for deployment as needed, and available to comply with individual site requirements. Whether it's haulage, lifting, pumping or support, we bring the right gear to get your job done safely and efficiently.

We offer specialised machinery tailored to meet specific contract needs. Whether it's a compact skid-steer loader fitted with a debris cleaner attachment or a Revo tipper truck for efficient material transport, we can supply the right equipment to suit your unique site conditions and operational goals.

- Light vehicles
- Flatbed service truck
- Integrated tool carrier
- Telehandler
- Concrete pump
- Excavator



## FABRICATION

We fabricate all key underground infrastructure in-house at our WA-based facility, ensuring total quality control, short lead times and flexibility to meet your unique specifications.

- Escapeways
- Ventilation system components
  - Wall kits
  - Vent louvers
  - Vent ducting
  - Cowling adaptors
  - Vent elbows
  - Wall adaptors
  - Drop board regulators
  - Fan bulkhead walls
- Personal access doors
- Essential underground components
  - Bollards
  - Lifting plates
  - Magazine gates
  - Skids
  - Poly clamps, brackets and support
  - Rising main and paste pipework
  - Custom fabrication



## SPECIALISED EQUIPMENT

In addition to our underground machinery fleet, we invest in and maintain specialised underground equipment in-house, ensuring availability, compliance and quality control for all your jobs and projects.

- Poly welding equipment
- Underground diesel welders and wire feeders
- Handheld mining equipment
- Grouting equipment

---

# UNDERGROUND SAFE. COMMUNITY STRONG.

A commitment to safety and sustainability is central to how we operate.

Through rigorous compliance, proactive risk management and meaningful community engagement, we ensure that our operations reflect the highest standards of care, integrity and collaboration.



---

## OUR PRODUCTS

We supply a range of high-quality escapeways, vent doors and personnel access doors designed specifically for the unique demands of underground mining.

- Available in standard sizes or fabricated to your specification
- Built in-house in WA to meet all Australian standards
- All critical factors including strength, durability, and maximum loading capacity tested and approved
- End to end project solutions, including design, construction and installation.

### Safety first: our safety culture and compliance

Safety in the underground mining environment cannot be comprised. For us, safety is the bedrock of all our operations, ensuring that our workers finish every day's work and get home safely.

We have developed a safety-first culture that ensures that each of our employees consider their safety and that of their fellow workers in all circumstances.

Everyone in our team shares responsibility for safety. We foster a culture where people look out for themselves and each other, on and off the job.

We understand that on complex mining projects, we're not always the only workers on site. That's why we bring a collaborative, one-team mindset, working safely and seamlessly alongside your own site teams and third-party contractors without compromising performance or timelines.

### Quality control: our certifications and standards

We align our operations with the highest industry standards, consistently meeting client expectations while progressing toward ISO 9001 (Quality Management) and ISO



---

### VENTILATION DOORS

Ventilation doors engineered to support airflow control in demanding underground environments. Designed and fabricated in-house, they're built tough to handle high-pressure conditions while meeting all compliance and safety standards.

Our ventilation doors comply with AS3990:1993 Mechanical equipment, Steelwork.

45001 (Occupational Health and Safety) certification. In addition, we are actively working toward accreditation by the Office of the Federal Safety Commissioner.

Our Safe System of Work complies with the WA WHS Act 2020 and associated Codes of Practice, with a strong emphasis on risk mitigation, regulatory compliance, and continuous improvement.

All our underground infrastructure is designed and manufactured in accordance with:

- WA WHS Legislation (Sections 22-26)
- Code of Practice: Managing Risks of Plant in the Workplace
- AS/NZS 1657:2018 – Fixed platforms, walkways, stairways, and ladders: Design, construction, and installation
- AS fabrication standards aligned with AS/NZS 1554.1

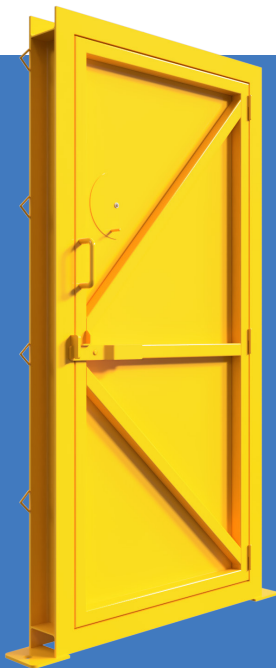
These standards ensure that every structure we deliver is safe, compliant and built to perform in the most demanding underground environments.

## **Sustainable operations: our social and community engagement approach**

We are keen to share the benefits of our success with the communities where we operate, recognising that strong relationships and local support are essential to sustainable operations.

We are proud supporters of the Cancer Council Australia's annual Rally, sponsoring a team in the rally each year for the past four years, helping to raise funds for cancer research, while giving our employees the opportunity to participate in a meaningful and memorable cause. As we all know someone who has been touched by cancer, this initiative holds special significance for our team.

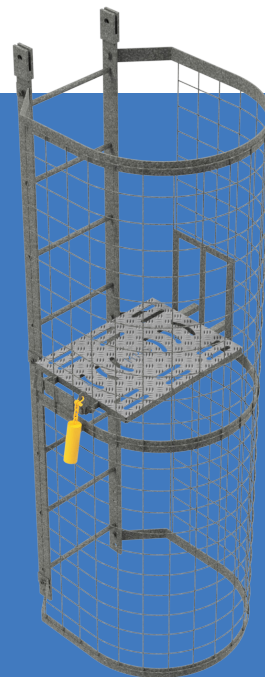
Safety is at the heart of our operations, and we proudly support the annual Underground Mine Emergency Response Competition, with awards for the Best Team and Best Captain, recognising excellence in emergency preparedness and response within the mining industry. We have been involved in this competition for the past five years, reflecting our commitment to safety beyond the workplace.



### **PERSONNEL ACCESS DOORS**

Personnel access doors purpose-built for underground use so they are strong, secure and easy to operate. Fabricated to your specification, they help ensure safe and efficient movement throughout the mine while maintaining structural integrity and ventilation control.

Our personnel doors comply with *AS/NZS 1657:2018* Fixed platforms, walkways, stairways and ladders.



### **FABRICATED ESCAPEWAYS**

Fabricated escapeways engineered to meet safety regulations and site-specific requirements, providing critical emergency egress pathways you can count on.

Our escapeways comply with *AS/NZS 1657: 2018* Fixed platforms, walkways, stairways and ladders.

---

# NATIONALLY TRUSTED.

We're a trusted partner for some of the biggest names in Australian mining.



## Carrapateena

Full-service underground infrastructure and ventilation.

---



Infrastructure and materials to support mine water management and ventilation.

---



## Riverina & Sand King

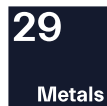
Supply and installation of ventilation, escapeways and dewatering infrastructure.

---



Underground works, supporting ventilation, civil construction, and project services.

---



## Golden Grove

Underground infrastructure works to support mine development and production activities.

---



## Fosterville

Critical safety infrastructure to support emergency egress and compliance.

---



Essential underground services to support mine development and water management.

---



## Bluebird

Supply of underground escapeways.

---

---

**Locally made.** 28 Sweny Drive, Australind, WA, 6233  
info@murchisonminingservices.com.au | 0438 990 931

[murchisonminingservices.com.au](http://murchisonminingservices.com.au)

